

Most holy God, the earth is filled with your glory, and before you all of creation stands in awe. Enlarge our vision to see your power at work in the world, and by your grace make us heralds of your Son, Jesus Christ, our Savior and Lord. Amen.

WELCOME VISITORS!

Thank you for visiting Shepherd of the Hill. We would love to remain in contact with you. Please fill out a communication card that you will find near the Bibles and hymnals in the pews. You can then give your card to Pastor, or drop it in one of the 3 collection boxes that are hanging on the back wall (east side) in the church. Thank you!

Shepherd of the Hill Lutheran Church

925. E. Ninth Street, Lockport, IL 60441

Our Mission: To Know Jesus & To Make Jesus Known

5th Sunday After Epiphany

February 8/9, 2025

Today's Altar Flowers Are For:
**Honoring the Birthdays of:
Mary, Gail, Doug, Leslie**

By: Mary Brauer



SOTH OFFICE STAFF

Jon Pedersen, Pastor
pastor.jon@shepherdofthehill.com
714-335-2216
815-838-0708

Dawn Virva
Parish Office Administrator
soth.office@shepherdofthehill.com
815-838-0708

Lisa McManis
Financial Secretary
soth.finsec@shepherdofthehill.com
815-838-0708

Megan Selle
Volunteer Coordinator
soth.VCoord@shepherdofthehill.com

COUNCIL

Fern Kinder—President
fernk@comcast.net

David Helfert—Vice Pres.
dphelfert@comcast.net

Jean Soderstrom—Treasurer
smiling7878@gmail.com

Ed Grabenhofer—Secretary
edgrabenhofer@gmail.com

COUNCIL AT LARGE:

Linda Bunting—
lindabunting01@sbcglobal.net

Mike Cole
mjcole87@yahoo.com

Keith Pintoy
keithpintoy@gmail.com

Brad Rosynek
brad.rosynek@icloud.com

Deborah Silic
debdoodie@aol.com

John TerHorst
anjhorst@yahoo.com

Pastor Jon Pedersen
pastor.jon@shepherdofthehill.com

Please feel free to contact any council member with questions or concerns you might have.

NURSERY IS OPEN!

If you have young children that would like to attend our nursery while you enjoy church services, please locate our nursery which is in the north hallway. This is a service that we provide for all families.

OUR FAITHFUL RESPONSE TO GOD'S LOVE

February 1/2, 2025

Attendance 118 / Online 38

General Fund	\$10,568.00
Altar Flowers	40.00
Memorial Fund	200.00
Music/Bells	150.00
Youth	616.00

Weekly Total *\$11,574.00

Principal Mortgage Balance:
\$190,625.20

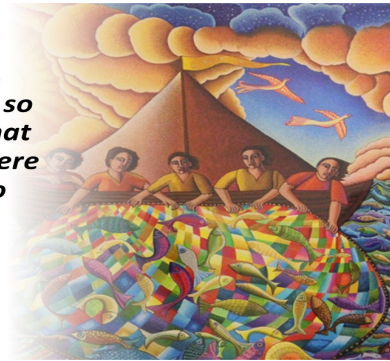
**Does not include Zelle or SimpleGive Payments*

Your giving makes a difference!

Check out our website for further information:
SHEPHERDOFTHEHILL.COM

When they had obeyed, they caught so many fish that their nets were beginning to break.

Luke 5:6



IN-PERSON WORSHIP

Saturday at 5pm
Sunday at 10am

JOIN US FOR OUR ONLINE SERVICE ON FACEBOOK / YOUTUBE

Available 10am on Sunday

CHILDREN'S MINISTRY

Registration forms available in the narthex for online access. Next in-person class will be 2/23.

CONTINUED PRAYERS *Healing God, we lift up those of our community that need healing and wholeness—*Les Tindle, Ken & Karen Franz, Madelene Vargo, Emily Vlk, Bob Barwa, Bob Fanello, Wally Lewandowski, Toni Leonard, Philip Ackland, Jessica Wallin, Lillianna Pelayo, Michael Anderson, Lenny Coe, Leroy Foster, Jason Haley, Brian Butler, Allan Franz, Alice Pritchett, Ron Slack, Tony Flaherty, Jeff Stubler, Don Soltis, Marvin Pickering, Stan & Eleanor Rzeminski, Naida Magercak, Gina Nordquist, Francis Kania, David McGuire, Paul England, Karen Bremmer, Kathy Helfert, Leonard Krch, Dylan Krestan, and Baby Noah Doyle.

WORLDWIDE PRAYERS

Those affected by wars in Ukraine, Sudan, Congo, and the Middle East. For the release of all the Israeli hostages. Those affected by the California wildfires.

ENDOWMENT BALANCE

\$80,641.47



SERVING IN THE MILITARY

Michael Meyers, Dakota Novander, Anthony Kopel, Kaitlin Reed, Melanie Rigoni, Nico Arellano, Katerina and Lenny Casselman, John Schneider, Tom Schneider, John B. Momich, Caitlyn Grabenhofer, Megan and Daniel Sanchez, Jack and Mike Superczynski, Seth Trent, Timea Sara, Anthony Martino, Eric John Stepek, Alphonso Huerta, Jr., Bradley Poerio, and Nathan Snyder.

HOMEBOUND

Norma McCall
Lily Mazeika
Janet Villacci
Sandra Schrader
Wally Lewandowski
Ken Franz

GIVE COMFORT TO THOSE GRIEVING THE LOSS OF LOVED ONES

Fletcher Lopp

Chili Luncheon

Sunday, Feb. 9th
after church

8oz cup of chili w/fixings
(Turkey, Chicken, or Beef)

Cornbread
Baked Potato

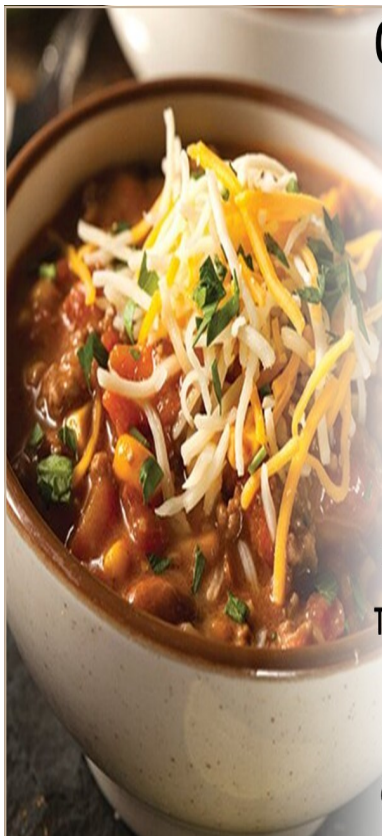
\$10 – adults

\$8- children

(tickets on sale in
narthex or call office)

To-go options available

Funds raised will support
the Youth Summer
adventures – LOMC &
Group Mission Workcamp.



THANK YOU, THANK YOU!

A great big thank you to our Property Team as well as Jaime Waldvogel for retrofitting our lighting fixtures to accommodate LED light-bulbs. This will lead us to be a much “greener” church, and will save on our electricity costs.

OUR NEW COUNCIL MEMBERS ARE LISTED ON THE BACK



Lutheran Disaster Response:
LA Wildfires

Multiple wildfires have broken out across Los Angeles County in California. Sparked by dry conditions, strong winds and a limited water supply, these fires have destroyed homes and businesses and have led to injuries and loss of life.

Lutheran Disaster Response will be there for the rebuilding ahead. Your gifts to Lutheran Disaster Response equip us to respond to wildfires and other disasters, wherever and whenever they strike. Learn more at ELCA.org/wildfires.



Scan the QR code or use
above link to give today.

If you receive giving envelopes and make your offerings online, please call Dawn at the office (815-838-0708) and I will stop your envelopes. Thanks!

Thank you for
your support of
the last youth
bake sale! We
made \$616!



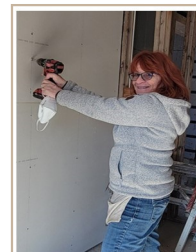
LET'S HELP TO CELEBRATE A SPECIAL 50TH ANNIVERSARY

Past beloved members of our congregation (Dennis and Lana Wellsandt) will be celebrating their 50th wedding anniversary on February 15. It would be nice to shower them with congratulatory cards and let them know that they are still treasured in our hearts. Please send your card to:

Dennis and Lana Wellsandt
704 SW 46th St.
Ankeny, Iowa 50023

JOIN US IN PLAYING DOMINOES

We are looking for a few more people to join us in playing Mexican Train Dominoes. We will begin meeting on **Tuesdays at 9:30am**. If you have any questions, please call Donna Rothlisberger at 815-954-2717. If you don't know how to play, we'll teach you.



**Our next Habitat
for Humanity
Build will be
Saturday, Feb. 15.**

**See SOTH website
or Pr. Jon to sign
up.**

Do you know someone who needs help with:

- financial assistance
- finding food
- finding low-cost medical services
- substance abuse
- coping with mental illness
- escaping domestic violence



Check out:
lockportresource.org/community-resources



Join us for SOTH Kid's Club,
our online kid's ministry for ages 4-11, starring
the Whirl Kids.

Join us online every week and in-person
the 2nd & 4th Sundays during worship.
February 23rd – next in-person event

Contact church office (815-838-0708) or Audrey
Bjerum (abjerum@gmail.com) to sign up

ANNOUNCING ZELLE!

We are excited to announce that we now accept payments for offerings, flowers, most anything, through **Zelle!** This fast and secure service allows you to send and receive money directly from your bank account, making transactions easier than ever. **How to Use Zelle:**

Enroll: Simply register your email or U.S. mobile number through your banking app.

- Send Money:** Enter the recipient's email (soth.finsec@shepherdofthehill.com), choose the amount, and hit send!

Why Choose Zelle?

- Speed:** Transfers are typically completed in minutes.
- Convenience:** No need for cash or checks—just use your bank's app.

Free to Use: There are no fees for sending or receiving money with Zelle.



Mental Health Support Groups Free & Confidential

CONNECTION SUPPORT
FOR ANY ONE EXPERIENCING
SYMPTOMS OF A MENTAL ILLNESS

FAMILY SUPPORT
FOR ANYONE WHO WANTSTO LEARN
MORE ABOUT SUPPORTING A LOVED
ONE WITH A MENTAL ILLNESS

3rd Thursday of Each Month
6:00 to 7:30 pm – SOTH

Next meeting for NAMI is Thursday, Feb. 20

END OF YEAR GIVING STATEMENTS

Giving statements for 2024 are in your church mailboxes. Those that are not picked up will be mailed out this week.